



ATT739 DEMO APP WINDOWS 11 FIX

v 1.0

Abstract

This document describes the procedure Fix the app issue in Windows 11

ATID CO., LTD

support@atid1.com

Contents

1. Summary	2
2. How to fix: Unblock the dependency library (Communication.dll)	3
3. Select "Properties"	4
4. Unblock the "dependency library"	5
5. Re-start the demo application.....	7
6. Validation	11

1. Summary

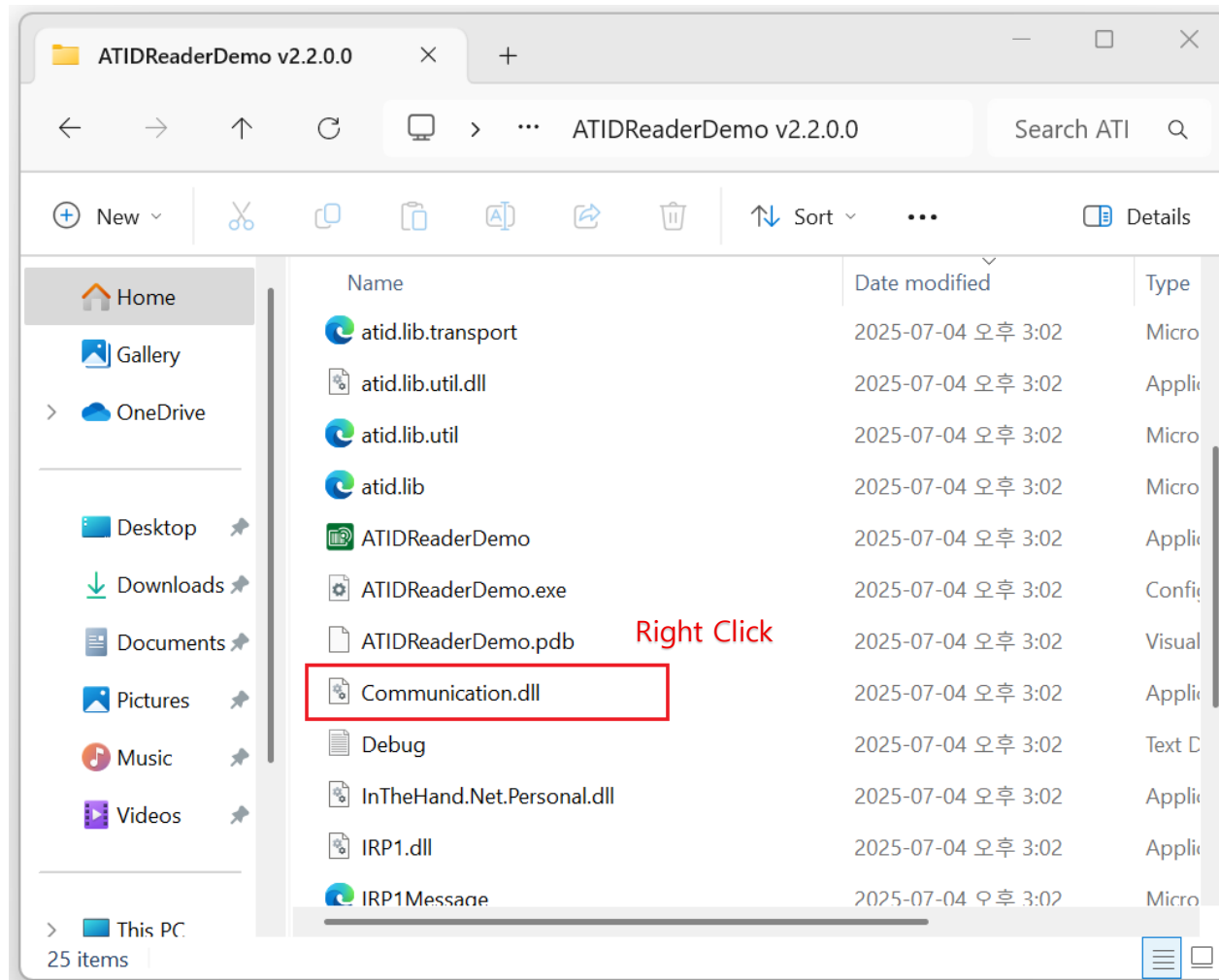
This document provides the fix to the ATT739 demo application issue in Windows 11 OS PCs.

ISSUE: Connection Fails (*Ref:* Image below)

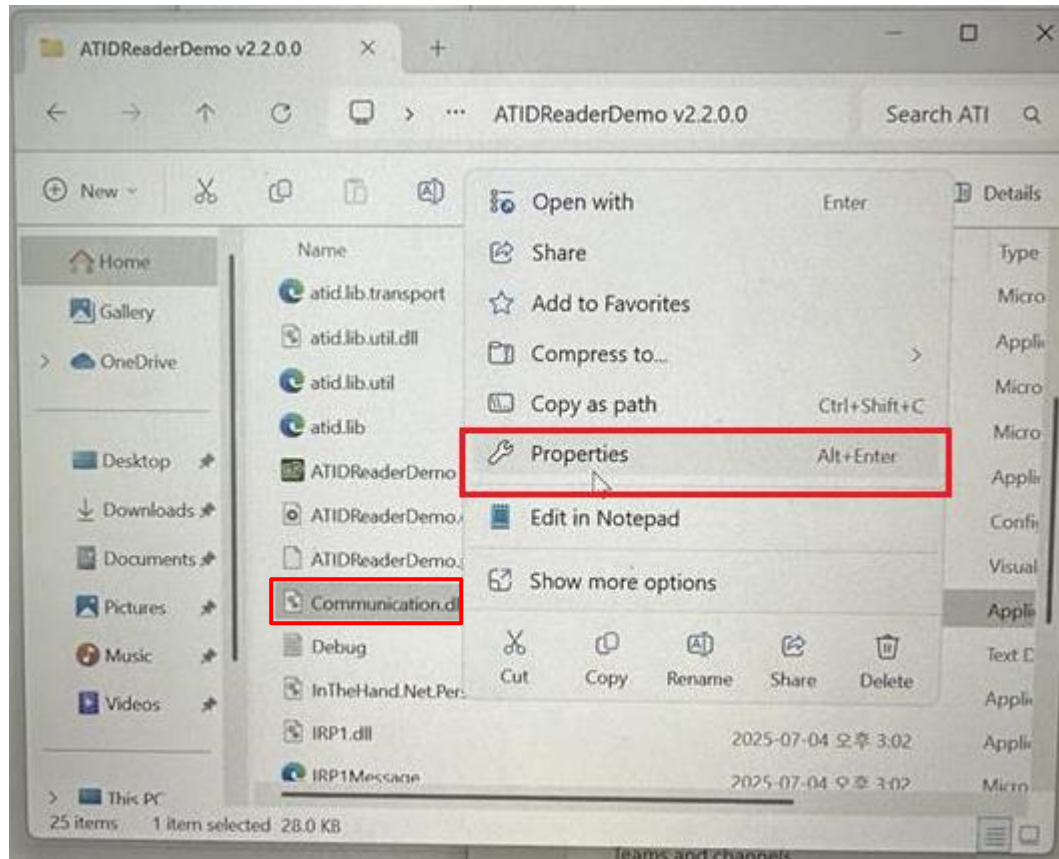
Cause: Windows 11 OS blocks the libraries download from internet or) copied from other PCs



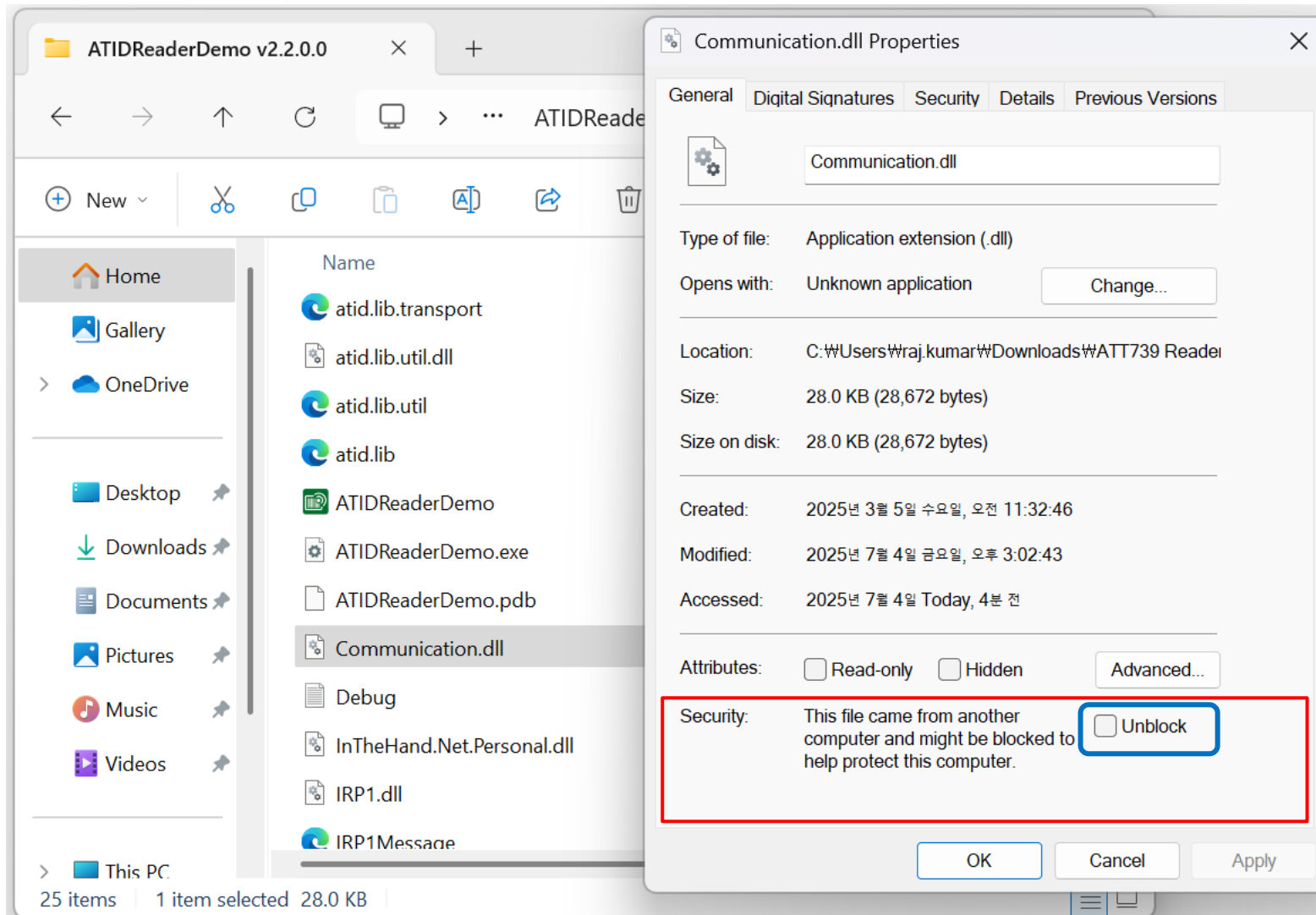
2. How to fix: Unblock the dependency library (Communication.dll)

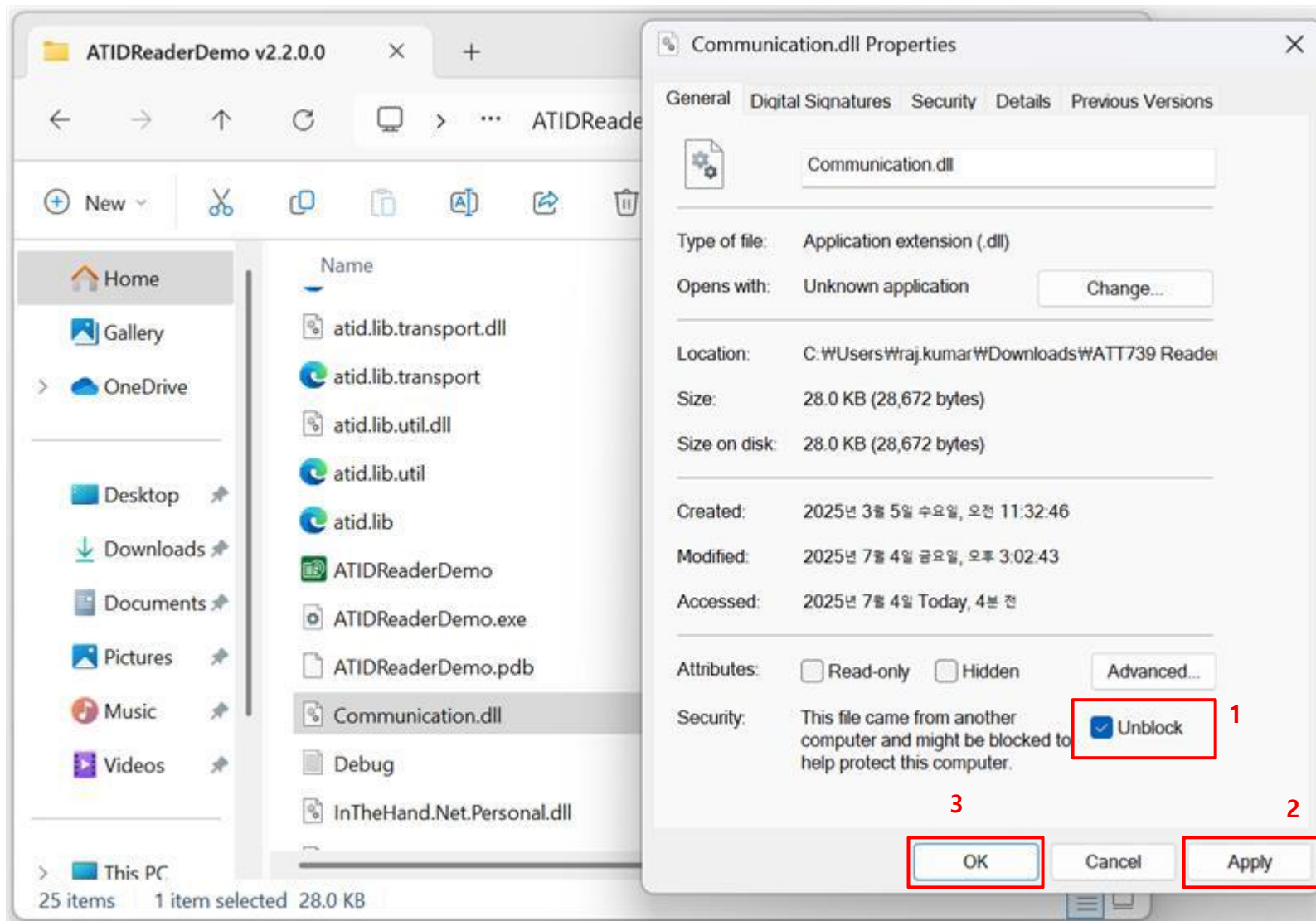


3. Select "Properties"

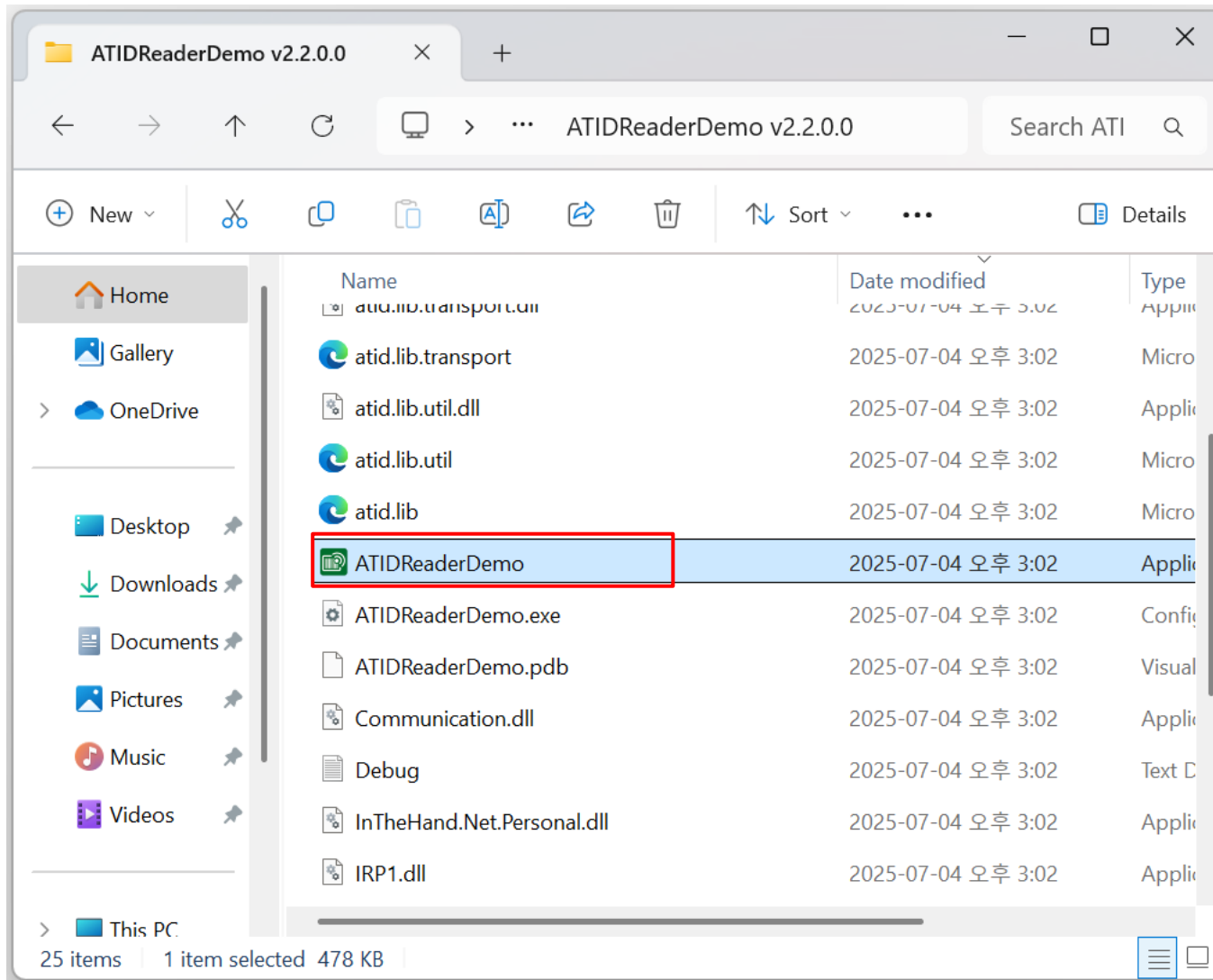


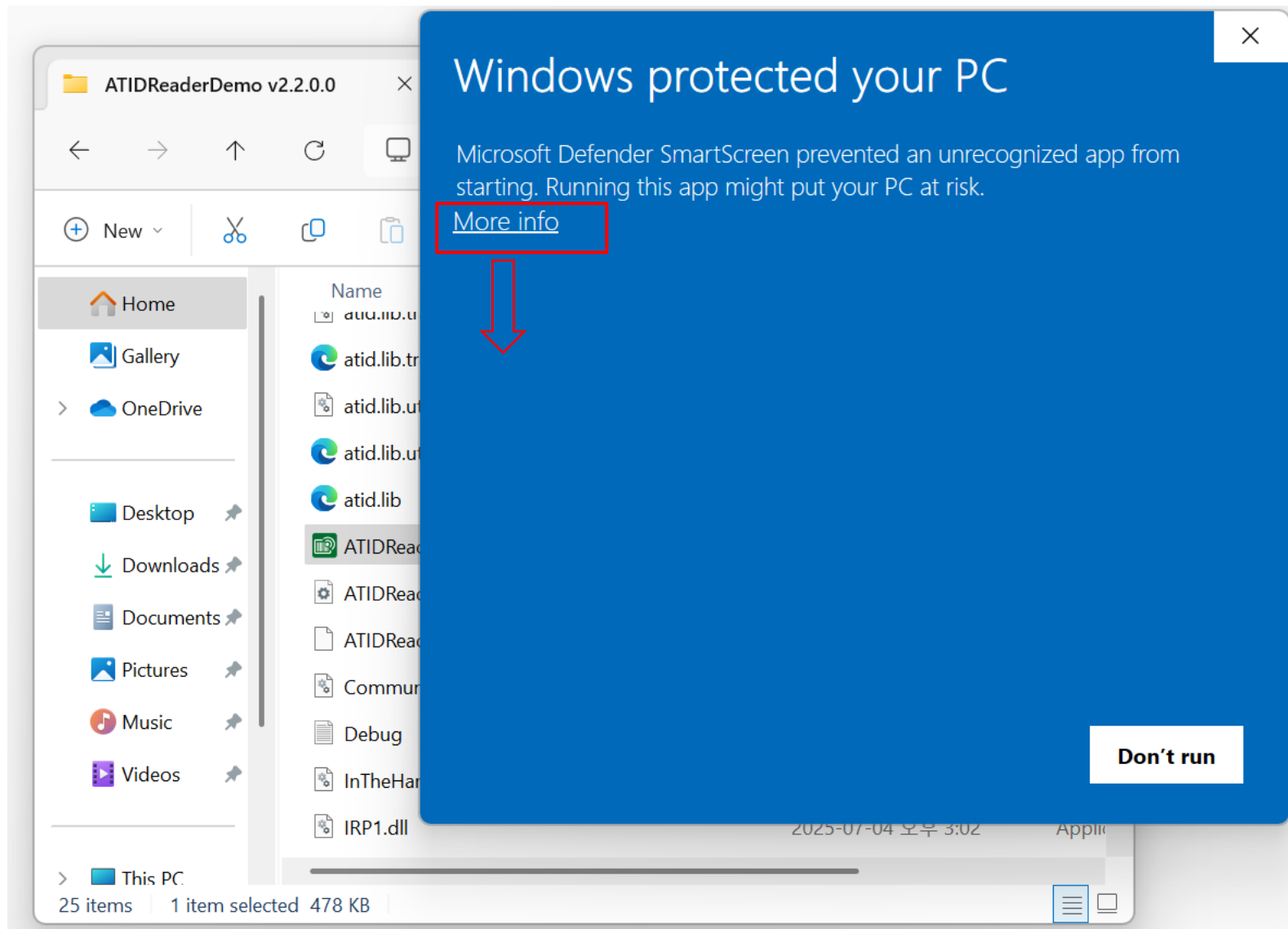
4. Unblock the "dependency library"

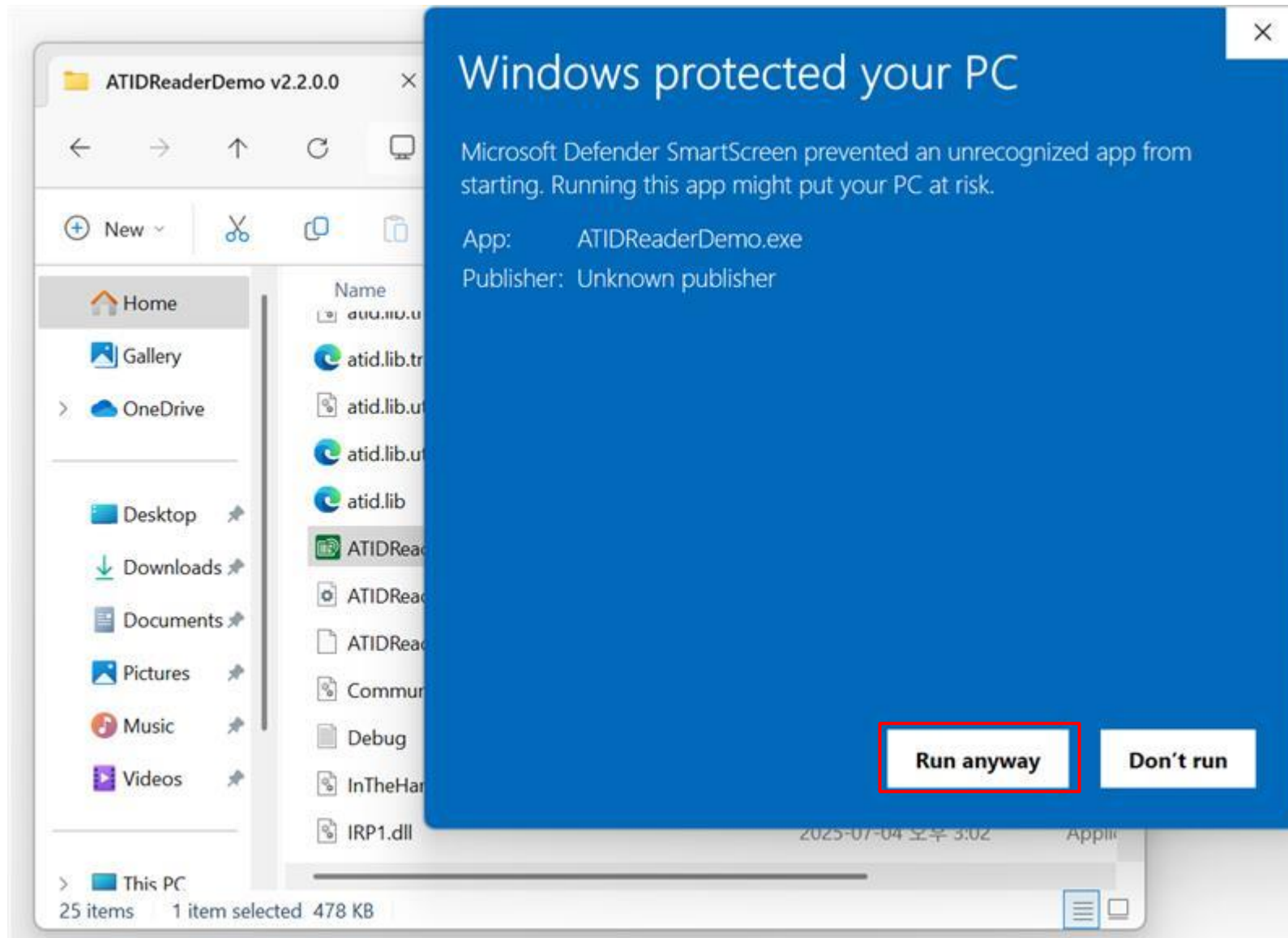




5. Re-start the demo application







ATID Reader Demo

Connection

1 ☒ VCP ☐ WIFI

2 Device: ATT739 Port name: COM18 3

Connect 4

Version: Demo 2.2.0.0

S/N: _____

Firmware: _____

Inventory

Stored Data

Access

Mask

Options

RFID TAG Values

No.	Value	RSSI	Phase	Frequency	#
-----	-------	------	-------	-----------	---

Barcode Values

No.	Type	Code ID	Value	#
-----	------	---------	-------	---

Count: 0

Operation Mode: ☐ RFID ☐ Barcode

Reader Mode: ☐ Single Tag ☐ Multi Tag

☐ Auto Save ☐ Filter ☐ RSSI ☐ Continuous

Clear Start Stop

Atid

6. Validation

The screenshot displays the ATID Reader Demo application window. The interface is divided into several sections:

- Connection:** Includes radio buttons for VCP (selected) and WIFI. Below are fields for Device (ATT739) and Port name (COM18), a Disconnect button, and fields for Version (2.2.0.0), S/N (RM8713CB2513000063), and Firmware (2.10).
- Inventory:** A button to initiate an inventory scan.
- Stored Data:** A button to view stored data.
- Access:** A button to manage access.
- Mask:** A button to manage masks.
- Options:** A button to access settings.
- RFID TAG Values:** A table displaying the results of an RFID scan. The table has columns for No., Value, RSSI, Phase, Frequency, and #.
- Count:** A large red number '35' indicating the number of tags found, with '1980' below it.
- Operation Mode:** A radio button for RFID.
- Reader Mode:** Radio buttons for Single Tag (selected) and Multi Tag.
- Controls:** Checkboxes for Auto Save, Filter, RSSI, and Continuous. Below these are Clear, Start, and Stop buttons.
- Log:** A text area at the bottom showing system messages and events.
- Atid Logo:** The ATID logo is located in the bottom left corner.

No.	Value	RSSI	Phase	Frequency	#
1	E28011700000217F3EFC542	61.0	0.00	0.00	57
2	05440D2CB487042C30C76CF9C75C7400	61.2	0.00	0.00	57
3	05440D2CB487042C30C76CF9C75C7200	61.1	0.00	0.00	57
4	E2806894000050045DB6DDC8	60.5	0.00	0.00	57
5	05440D2CB487042C30C76CF9C75C7100	60.8	0.00	0.00	57
6	240000522441514533934921	59.7	0.00	0.00	57
7	240000332437515162328950	61.5	0.00	0.00	60
8	05440D2CB487042C30C76CF9C75C3500	60.6	0.00	0.00	57
9	E2806894000050045DB665C8	60.9	0.00	0.00	57
10	E2806894000050045DB68DC8	60.7	0.00	0.00	57
11	E28011700000217F3EFC522	60.4	0.00	0.00	57
12	E2806894000050045DB6D1C8	59.6	0.00	0.00	57
13	E28068940000502A2BE694FB	60.8	0.00	0.00	57
14	240000362441514541565986	60.3	0.00	0.00	57
15	E2806894000040045DB6D9C8	60.9	0.00	0.00	57
16	05440D2CB487042C30C76CF9C75C3300	60.6	0.00	0.00	57
17	240000332437515170910175	59.9	0.00	0.00	57
18	E2806894000050045DB6A9C8	59.2	0.00	0.00	57
19	E28011700000217F3EFABD2	60.5	0.00	0.00	57
20	E28068940000402A2BE6ACFB	60.4	0.00	0.00	57
21	05440D2CB487042C30C76CF9C75C3800	59.8	0.00	0.00	57

Log messages:

```
[16:04:10,829] INFO, ContinuousMode [True]
[16:04:10,829] INFO, FilterMode [False]
[16:04:10,859] INFO, EndInit
[16:04:17,694] INFO, action()
[16:04:17,700] EVENT, onReaderActionChanged - [Inventory (6c)]
```